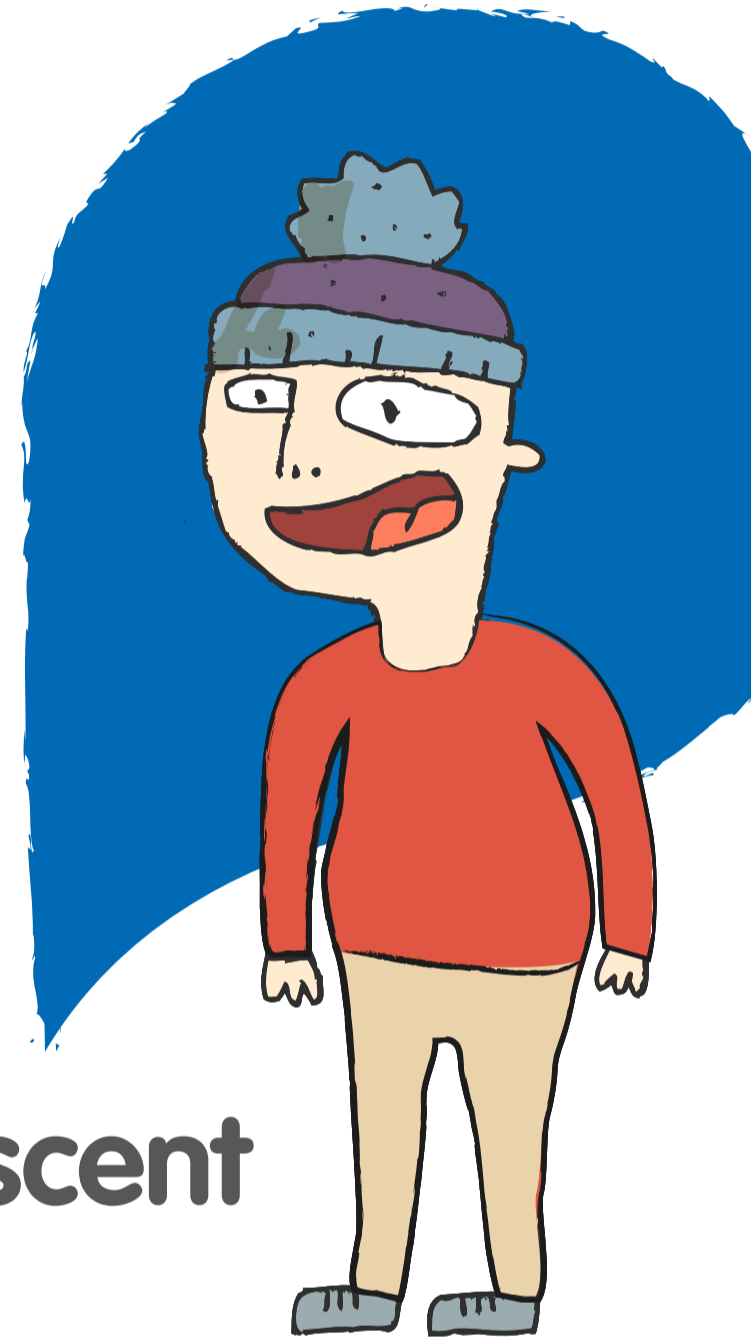


We are moving!



Kensington and Chelsea CAMHS (Child and Adolescent Mental Health Service)

From March 2019, the Kensington and Chelsea
CAMHS team will be moving to:

1B Beatrice Place, Marloes Road, London W8 5LW



The nearest stations are **Earls Court** and **High Street Kensington**.



The nearest buses are close to **High Street Kensington** and **Cromwell Road**.